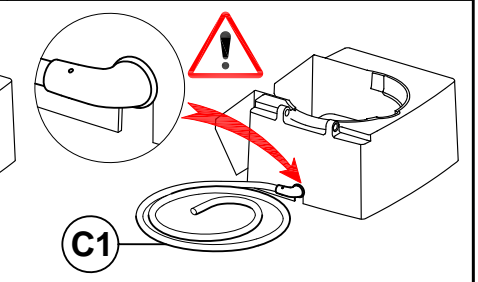
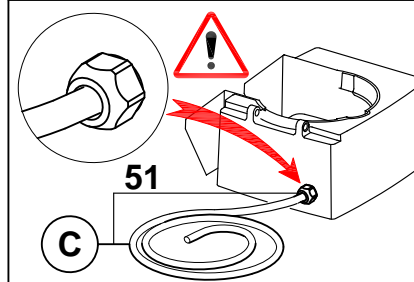
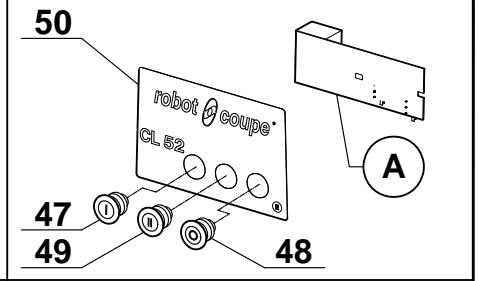
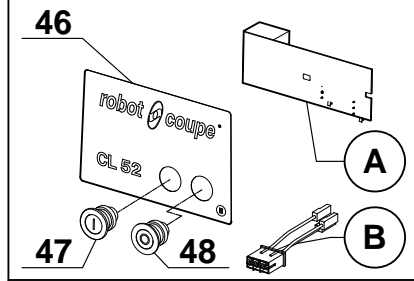


Plus disponible :
commander 23 et C1.
No longer available :
order 23 and C1.

Pour modèle 1 vitesse (2 boutons). For 1 speed model (2 knobs).
Pour modèle 2 vitesses "2V" (3 boutons). For 2 speeds model "2V" (3 knobs).



X / Y / Z : POUR LES MACHINES MONOPHASEES UNIQUEMENT / ONLY FOR SINGLE PHASE MACHINES